

WIRELESS FUND

Annual Report

March 31, 2018

Letter To Shareholders, May 2018

For the twelve month period ended March 31, 2018, the Wireless Fund (the “Fund”) posted a total return of 15.18%. For comparative purposes, the Standard & Poor’s 500® Index was up 13.99% and the NASDAQ Composite Index gained 20.76%, for the same period.

Some of the larger holdings that helped to add to the Fund’s performance during the fiscal year ended March 31, 2018 included Alphabet Inc. (Nasdaq: GOOGL and GOOG), Apple Inc. (Nasdaq: AAPL), and Microsoft Corporation (Nasdaq: MSFT). Alphabet Inc. (Nasdaq: GOOGL and GOOG) was the largest holding in the Fund at 10.27% of net assets. Alphabet (GOOGL) was up in excess of 22% during the fiscal year ended March 31, 2018. Apple Inc. was the Fund’s second largest holding at 9.16% of the Fund’s net assets. During the Fund’s fiscal year ended March 31, 2018, Apple Inc. returned in excess of 18%. Microsoft Corporation also contributed very positively by returning in excess of 41% during the same period.

Some of the specific holdings that detracted from the Fund’s performance during the fiscal year ended March 31, 2018, included TMobile US, Inc. (Nasdaq: TMUS), AT&T Inc. (NYSE: T), and PT Telekomunikasi Indonesia Tbk (NSYE: TLK). TMobile slipped approximately 5%, AT&T was down more than 9%, and PT Telekomunikasi dropped more than 12%.

The “Services - Computer Programming, Data Processing, Etc.” sector represented the largest percentage of the Fund’s net assets at 22.27%. Alphabet Inc. (Class A and Class C shares) represented the largest holding in this sector. Alphabet provides online advertising services in the United States and internationally. The company offers performance and brand advertising services. It operates through Google and Other Bets segments. The Google segment includes principal Internet products, such as Ads, Android, Chrome, Commerce, Google Cloud, Google Maps, Google Play, Hardware, Search, and YouTube, as well as technical infrastructure and newer efforts, including Virtual Reality. This segment also offers digital content, enterprise cloud services, and hardware products, as well as other miscellaneous products and services. The Other Bets segment includes businesses, such as Access, Calico, CapitalG, GV, Nest, Verily, Waymo, and X, and other initiatives. Android is a mobile operating system designed primarily for touchscreen mobile devices such as smartphones and tablets. Android has the largest installed base of all operating systems of any kind.

The Telephone Communications (No Radio Telephone) sector represented the second largest percentage of the Fund’s net assets at 14.77%. America Movil SAB de CV (NYSE: AMX) was the Fund’s top holding in this sector at 5.73% of net assets. America Movil provides telecom-

munications services in Mexico and internationally. The company offers wireless and fixed voice services, including airtime, local, domestic, and international long-distance services; and network interconnection services. It also provides data services, such as internet access, messaging, and other wireless entertainment and corporate services; data transmission, email services, instant messaging, content streaming, and interactive applications; and data center, data administration, and hosting services to residential and corporate clients, as well as residential broadband services. America Movil was founded in 2000 and is based in Mexico City, Mexico.

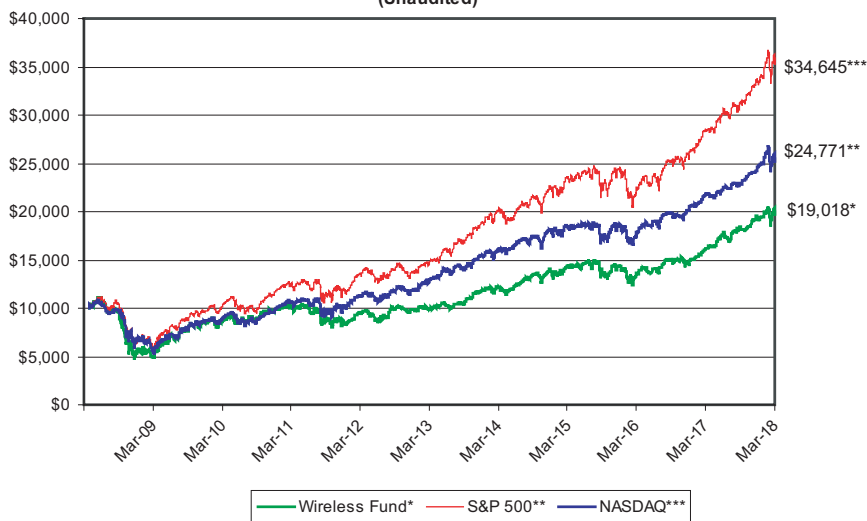
The Semiconductors and Related Devices sector represented the third largest percentage of the Fund's net assets at 14.25%. Texas Instruments Inc. (NYSE: TXN) was the Fund's top holding in this sector at 5.93% of net assets. Texas Instruments designs, manufactures, and sells semiconductors to electronics designers and manufacturers worldwide. It operates in two segments, Analog and Embedded Processing. The Analog segment offers power products to manage power requirements in various levels using battery management solutions, portable components, power supply controls, point-of-load products, switches and interfaces, integrated protection devices, high-voltage products, and mobile lighting and display products. The Embedded Processing segment offers connected microcontrollers, such as microcontrollers, microcontrollers with integrated wireless capabilities, and stand-alone wireless connectivity solutions that are used in electronic equipment to sense, connect, log, and transfer data; and digital signal and applications processors for mathematical computations and specific computing activity.

We are looking forward to the next wireless revolution. As always, we appreciate your confidence in our abilities and thank you for your investment in the Wireless Fund.

Jeffrey R. Provence

Past performance does not guarantee future results. The investment return and principal value of an investment will fluctuate so that an investor's shares, when redeemed, may be worth more or less than their original cost. Current performance may be lower or higher than the performance data quoted. You may obtain performance data current to the most recent month-end by calling toll free 1-800-590-0898. Investors should consider the investment objectives, risks, and charges and expenses of the Fund carefully before investing. The prospectus contains this and other information about the Fund. You may obtain a prospectus on our website www.wireless-fund.com or by calling toll free 1-800-590-0898. An investment in the Fund is subject to investment risks, including the possible loss of the principal amount invested. The Fund's principal underwriter is Rafferty Capital Markets, LLC.

**The Value of a \$10,000 Investment in the Wireless Fund
from April 1, 2008 to March 31, 2018
as Compared to the NASDAQ and the Standard & Poor's 500 Index
(Unaudited)**



Average annual total returns for the periods ended 3/31/18 (Unaudited)

3/31/18 NAV \$10.70

	<u>1 Year*</u>	<u>3 Year*</u>	<u>5 Year*</u>	<u>10 Year*</u>
Wireless Fund	15.18%	10.13%	13.50%	6.64%
NASDAQ**	20.76%	14.27%	18.07%	13.23%
Standard & Poor's 500® Index***	13.99%	10.78%	13.31%	9.49%

Total Annual Fund Operating Expense Ratio (from 07/28/17 Prospectus): 1.97%

The Total Annual Operating Expense Ratio reported above will not correlate to the expense ratio in the Fund's financial highlights because the financial highlights include only the direct operating expenses incurred by the Fund, not the indirect costs of investing in acquired funds.

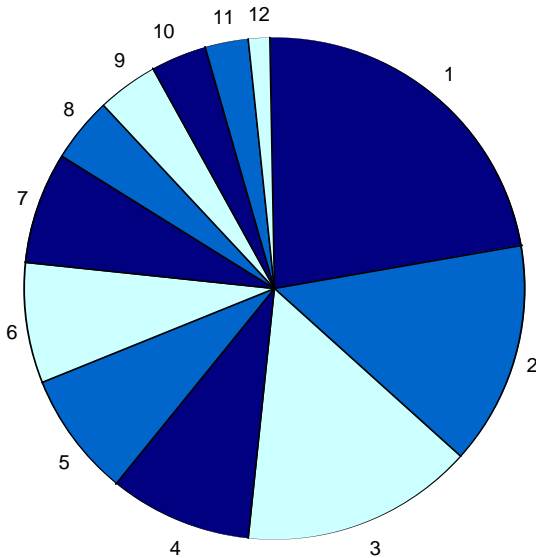
*1 Year, 3 Year, 5 Year and 10 Year returns include change in share prices and in each case includes reinvestment of any dividends and capital gain distributions. The returns shown do not reflect the deduction of taxes that a shareholder would pay on Fund distributions or the redemption of Fund shares.

**The NASDAQ Composite (NASDAQ) is a capitalization-weighted index of all common stocks listed on NASDAQ and is an unmanaged group of stocks whose composition is different from the Fund.

***The Standard & Poor's 500® Index (S&P 500) is a broad market-weighted average dominated by blue-chip stocks and is an unmanaged group of stocks whose composition is different from the Fund.

PAST PERFORMANCE DOES NOT GUARANTEE FUTURE RESULTS. INVESTMENT RETURN AND PRINCIPAL VALUE WILL FLUCTUATE SO THAT SHARES, WHEN REDEEMED, MAY BE WORTH MORE OR LESS THAN THEIR ORIGINAL COST. RETURNS DO NOT REFLECT THE DEDUCTION OF TAXES THAT A SHAREHOLDER WOULD PAY ON FUND DISTRIBUTIONS OR THE REDEMPTION OF FUND SHARES. CURRENT PERFORMANCE MAY BE LOWER OR HIGHER THAN THE PERFORMANCE DATA QUOTED. TO OBTAIN PERFORMANCE DATA CURRENT TO THE MOST RECENT MONTH END, PLEASE CALL 1-800-590-0898. AN INVESTMENT IN THE FUND IS SUBJECT TO INVESTMENT RISKS, INCLUDING THE POSSIBLE LOSS OF THE PRINCIPAL AMOUNT INVESTED. THE FUND'S DISTRIBUTOR IS RAFFERTY CAPITAL MARKETS, LLC.

Wireless Fund Sector Distribution (Unaudited)
 (As a Percentage of Net Assets)



Industry Sector

Percentage of Net Assets

1. Services - Computer Programming, Data Processing, Etc.	22.27%
2. Telephone Communications (No Radio Telephone)	14.77%
3. Semiconductors and Related Devices	14.25%
4. Electronic Computers	9.16%
5. Real Estate Investment Trusts	8.27%
6. Services - Prepackaged Software	8.04%
7. Radio Telephone Communications	7.07%
8. Computer Communications Equipment	4.58%
9. Cash Equivalents and Other Assets in Excess of Liabilities	3.74%
10. Radio & TV Broadcasting & Communications Equipment	3.65%
11. Communications Services	2.76%
12. Retail - Catalog & Mail-Order Houses	1.44%

PROXY VOTING GUIDELINES
 (Unaudited)

Value Trend Capital Management, LP, the Fund's Adviser, is responsible for exercising the voting rights associated with the securities held by the Fund. A description of the policies and procedures used by the Adviser in fulfilling this responsibility is available without charge on the Fund's website at www.wireless-fund.com. It is also included in the Fund's Statement of Additional Information, which is available on the Securities and Exchange Commission's website at <http://www.sec.gov>.

Information regarding how the Fund voted proxies, Form N-PX, relating to portfolio securities during the most recent 12-month period ended June 30 is available without charge, upon request, by calling our toll free number (1-800-590-0898). This information is also available on the Securities and Exchange Commission's website at <http://www.sec.gov>.

Availability of Quarterly Schedule of Investments (Unaudited)

The Fund files its complete schedule of portfolio holdings with the Securities and Exchange Commission (“SEC”) for the first and third quarters of each fiscal year on Form N-Q. The Fund’s Forms N-Q are available on the SEC’s Web site at <http://www.sec.gov>. The Fund’s Forms N-Q may also be reviewed and copied at the SEC’s Public Reference Room in Washington, DC. Information on the operation of the Public Reference Room may be obtained by calling 1-800-SEC-0330.

Disclosure of Expenses (Unaudited)

Shareholders of this Fund incur ongoing costs, consisting of management fees and other Fund expenses. The following example is intended to help you understand your ongoing costs of investing in the Fund and to compare these costs with similar costs of investing in other mutual funds. If shares are redeemed within 90 days of purchase from the Fund, the shares are subject to a 2% redemption fee. Additionally, IRA accounts will be charged an \$8.00 annual maintenance fee. The example is based on an investment of \$1,000 invested at the beginning of the period and held for the entire period from October 1, 2017 to March 31, 2018.

The first line of the table below provides information about actual account values and actual expenses. In order to estimate the expenses a shareholder paid during the period covered by this report, shareholders can divide their account value by \$1,000 (for example, an \$8,600 account value divided by \$1,000 = 8.6) and then multiply the result by the number in the first line under the heading entitled “Expenses Paid During the Period.”

The second line of the table below provides information about hypothetical account values and hypothetical expenses based on the Fund’s actual expense ratio and an assumed rate of return of 5% per year before expenses, which is not the Fund’s actual return. The hypothetical account values and expenses may not be used to estimate the actual ending account balance or expenses paid by a shareholder for the period. You may use this information to compare the ongoing costs of investing in the Fund and other funds. To do so, compare the 5% hypothetical example with the 5% hypothetical examples that appear in other funds’ shareholder reports.

Please note that the expenses shown in the table are meant to highlight your ongoing costs only and do not reflect any transactional costs, such as redemption fees or IRA maintenance fees described above and expenses of the underlying funds. Therefore, the second line of the table is useful in comparing ongoing costs only, and will not help you determine the relative cost of owning different funds. In addition, if these transactional costs and expenses of underlying funds were included, your cost could have been higher.

	Beginning Account Value <u>October 1, 2017</u>	Ending Account Value <u>March 31, 2018</u>	Expenses Paid During the Period* <u>October 1, 2017 to March 31, 2018</u>
Actual	\$1,000	\$1,044.92	\$9.94
Hypothetical (5% annual return before expenses)	\$1,000	\$1,015.21	\$9.80

* Expenses are equal to the Fund’s annualized expense ratio of 1.95%, multiplied by the average account value over the period, multiplied by 182/365 (to reflect the one-half year period).

SCHEDULE OF INVESTMENTS - WIRELESS FUND

MARCH 31, 2018

Shares	Fair Value	% of Net Assets
COMMON STOCKS		
Communications Services		
650 SBA Communications Corp. - Class A *	\$ 111,098	2.76%
Computer Communications Equipment		
4,300 Cisco Systems, Inc.	184,427	4.58%
Electronic Computers		
2,200 Apple Inc.	369,116	9.16%
Radio Telephone Communications		
2,900 T-Mobile US, Inc. *	177,016	
3,872 Vodafone Group PLC **	107,719	
	284,735	7.07%
Radio & TV Broadcasting & Communications Equipment		
2,650 QUALCOMM Inc.	146,836	3.65%
Retail - Catalog & Mail-Order Houses		
40 Amazon.com, Inc. *	57,894	1.44%
Semiconductors and Related Devices		
690 Broadcom Inc.	162,599	
1,720 Skyworks Solutions Inc.	172,447	
2,300 Texas Instruments Inc.	238,947	
	573,993	14.25%
Services - Computer Programming, Data Processing, Etc.		
200 Alphabet Inc. - Class A *	207,428	
200 Alphabet Inc. - Class C *	206,358	
770 Baidu, Inc. * **	171,856	
1,950 Facebook, Inc. - Class A *	311,591	
	897,233	22.27%
Services - Prepackaged Software		
3,550 Microsoft Corporation	324,008	8.04%
Telephone Communications (No Radio Telephone)		
12,100 América Móvil, S.A.B. de C.V. **	230,989	
3,000 AT&T Inc.	106,950	
4,300 PT Telekomunikasi Indonesia Tbk **	113,606	
3,000 Verizon Communications Inc.	143,460	
	595,005	14.77%
Total for Common Stocks (Cost \$1,707,841)	3,544,345	87.99%
Real Estate Investment Trusts		
1,200 American Tower Corp.	174,408	
1,450 Crown Castle International Corp.	158,935	
Total for Real Estate Investment Trusts (Cost - \$263,711)	333,343	8.27%
Money Market Funds		
76,073 First American Treasury Obligations Fund Cl Y Rate 1.25% ***	76,073	1.89%
(Cost - \$76,073)		
Total Investments		
(Cost - \$2,047,625)	3,953,761	98.15%
Other Assets in Excess of Liabilities	74,332	1.85%
Net Assets	\$ 4,028,093	100.00%

* Non-Income producing securities.

** ADR - American Depositary Receipt.

*** The Yield Rate shown represents the 7-day yield at March 31, 2018.

The accompanying notes are an integral part of the financial statements.

WIRELESS FUND

Statement of Assets and Liabilities

March 31, 2018

Assets:	
Investment Securities at Fair Value	\$ 3,953,761
(Cost - \$2,047,625)	
Receivables:	
Dividends	1,577
Securities Sold	79,661
Total Assets	4,034,999
Liabilities:	
Payables:	
Management Fees	6,906
Total Liabilities	6,906
Net Assets	\$ 4,028,093
Net Assets Consist of:	
Paid In Capital	\$ 2,035,506
Accumulated Net Investment Income (Loss)	(5,953)
Accumulated Realized Gain (Loss) on Investments - Net	92,404
Unrealized Appreciation (Depreciation) in Value of Investments Based on Identified Cost - Net	1,906,136
Total	4,028,093
Net Assets, for 376,493 Shares Outstanding	\$ 4,028,093
(Unlimited number of shares authorized without par value)	
Net Asset Value and Offering Price	
Per Share (\$4,028,093/376,493 shares)	\$ 10.70
Minimum Redemption Price Per Share * (\$10.70x0.98)	\$ 10.49

Statement of Operations

For the fiscal year ended March 31, 2018

Investment Income:	
Dividends (Net of foreign withholding tax of \$1,081)	\$ 68,178
Total Investment Income	68,178
Expenses:	
Management Fees	79,334
Total Expenses	79,334
Net Investment Income (Loss)	(11,156)
Realized and Unrealized Gain (Loss) on Investments:	
Net Realized Gain (Loss) on Investments	237,904
Net Change in Unrealized Appreciation (Depreciation) on Investments	337,894
Total	575,798
Net Realized and Unrealized Gain (Loss) on Investments	575,798
Net Increase (Decrease) in Net Assets from Operations	\$ 564,642

* Reflects a 2% redemption fee if shares are redeemed within 90 days of purchase.

The accompanying notes are an integral part of the financial statements.

WIRELESS FUND

Statements of Changes in Net Assets

	4/1/2017 to 3/31/2018	4/1/2016 to 3/31/2017
From Operations:		
Net Investment Income (Loss)	\$ (11,156)	\$ (4,913)
Net Realized Gain (Loss) on Investments	237,904	535,970
Net Change in Unrealized Appreciation (Depreciation)	337,894	15,659
Increase (Decrease) in Net Assets from Operations	564,642	546,716
From Distributions to Shareholders:		
Net Investment Income	-	-
Net Realized Gain from Security Transactions	-	-
Change in Net Assets from Distributions	-	-
From Capital Share Transactions:		
Proceeds From Sale of Shares	233,331	228,550
Proceeds From Redemption Fees (Note 2)	118	434
Shares Issued on Reinvestment of Dividends	-	-
Cost of Shares Redeemed	(552,611)	(672,117)
Net Increase (Decrease) from Shareholder Activity	(319,162)	(443,133)
Net Increase (Decrease) in Net Assets	245,480	103,583
Net Assets at Beginning of Period	3,782,613	3,679,030
Net Assets at End of Period (Including Accumulated Net Investment Income (Loss) of (\$5,953) and (\$4,731), respectively)	\$ 4,028,093	\$ 3,782,613
Share Transactions:		
Issued	22,682	27,283
Reinvested	-	-
Redeemed	(53,321)	(81,334)
Net Increase (Decrease) in Shares	(30,639)	(54,051)
Shares Outstanding, Beginning of Period	407,132	461,183
Shares Outstanding, End of Period	376,493	407,132

Financial Highlights

	4/1/2017 to 3/31/2018	4/1/2016 to 3/31/2017	4/1/2015 to 3/31/2016	4/1/2014 to 3/31/2015	4/1/2013 to 3/31/2014
Selected data for a share outstanding throughout the period:					
Net Asset Value -					
Beginning of Period	\$ 9.29	\$ 7.98	\$ 8.01	\$ 6.87	\$ 5.86
Net Investment Income (Loss) ^(a)	(0.03)	(0.01)	(0.02)	(0.04)	0.24
Net Gains or Losses on Investments (realized and unrealized) ^(b)	1.44	1.32	(0.01)	1.39	0.78
Total from Investment Operations	1.41	1.31	(0.03)	1.35	1.02
Proceeds from Redemption Fees	-	-	-	0.01	-
Distributions (From Net Investment Income)	-	-	-	(0.22)	(0.01)
Distributions (From Realized Capital Gains)	-	-	-	-	-
Total Distributions	-	-	-	(0.22)	(0.01)
Net Asset Value -					
End of Period	\$ 10.70	\$ 9.29	\$ 7.98	\$ 8.01	\$ 6.87
Total Return ^(c)	15.18%	16.42%	(0.37)%	20.10%	17.42%
Ratios/Supplemental Data					
Net Assets - End of Period (Thousands)	\$ 4,028	\$ 3,783	\$ 3,679	\$ 3,768	\$ 3,014
Ratio of Expenses to Average Net Assets	1.95%	1.95%	1.95%	1.95%	1.95%
Ratio of Net Investment Income (Loss) to Average Net Assets	-0.27%	-0.14%	-0.25%	-0.49%	3.71%
Portfolio Turnover Rate	0.13%	15.57%	4.40%	21.22%	28.75%

* Amounts were less than +/- \$0.005 per share.

(a) Per Share amounts calculated using Average Shares Outstanding method.

(b) Realized and unrealized gains and losses per share in this caption are balancing amounts necessary to reconcile the change in net asset value per share for the period, and may not reconcile with the aggregate gains and losses in the Statement of Operations due to share transactions for the period.

(c) Total Returns represent the rate that the investor would have earned or lost on an investment in the Fund assuming reinvestment of dividends. Total return calculation does not reflect redemption fee.

The accompanying notes are an integral part of the financial statements.

NOTES TO FINANCIAL STATEMENTS - WIRELESS FUND

March 31, 2018

1.) ORGANIZATION

Wireless Fund (the "Fund") is a non-diversified series of the PFS Funds (the "Trust"), an open-ended management investment company. Prior to March 5, 2010 the Trust was named Wireless Fund. The Trust was organized in Massachusetts as a business trust on January 13, 2000 and may offer shares of beneficial interest in a number of separate series, each series representing a distinct fund with its own investment objectives and policies. The Fund, under normal market conditions, invests at least 80% of its assets in the securities of companies engaged in the development, production, or distribution of wireless related products or services. As of March 31, 2018, there were eight series operating in the Trust. The Fund's primary investment objective is to seek long-term growth of capital.

2.) SIGNIFICANT ACCOUNTING POLICIES

The Fund is an investment company and accordingly follows the investment company accounting and reporting guidance of the Financial Accounting Standards Board ("FASB") Accounting Standards Codification Topic 946 *Financial Services - Investment Companies*. The financial statements are prepared in conformity with accounting principles generally accepted in the United States of America ("GAAP"). The Fund follows the significant accounting policies described in this section.

SECURITY VALUATION

All investments in securities are recorded at their estimated fair value, as described in Note 3.

SHARE VALUATION

The net asset value per share (the "NAV") is generally calculated as of the close of trading on the New York Stock Exchange (the "Exchange") (normally 4:00 p.m. Eastern time) every day the Exchange is open. The NAV is calculated by taking the total value of the Fund's assets, subtracting its liabilities, and then dividing by the total number of shares outstanding, rounded to the nearest cent. The offering price and redemption price per share is equal to the net asset value per share, except that shares of the Fund are subject to a redemption fee of 2% if redeemed within 90 days of purchase. During the fiscal year ended March 31, 2018, proceeds from redemption fees were \$118.

DISTRIBUTIONS TO SHAREHOLDERS

Distributions to shareholders, which are determined in accordance with income tax regulations, are recorded on the ex-dividend date. The treatment for financial reporting purposes of distributions made to shareholders during the year from net investment income or net realized capital gains may differ from their ultimate treatment for federal income tax purposes. These differences are caused primarily by differences in the timing of the recognition of certain components of income, expense, or realized capital gain for federal income tax purposes. Where such differences are permanent in nature, they are reclassified in the components of the net assets based on their ultimate characterization for federal income tax purposes. Any such reclassifications will have no effect on net assets, results of operations, or net asset values per share of the Fund. For the fiscal year ended March 31, 2018, \$9,934 of net investment loss was reclassified to paid in capital.

FEDERAL INCOME TAXES

The Fund's policy is to continue to comply with the requirements of the Internal Revenue Code that are applicable to regulated investment companies and to distribute all of its taxable income to shareholders. Therefore, no federal income tax provision is required. It is the Fund's policy to distribute annually, prior to the end of the calendar year, dividends sufficient to satisfy excise tax requirements of the Internal Revenue Code. This Internal Revenue Code requirement may cause an excess of distributions over the book year-end accumulated income. In addition, it is the Fund's policy to distribute annually, after the end of the fiscal year, any remaining net investment income and net realized capital gains.

The Fund recognizes the tax benefits of certain tax positions only where the position is "more likely than not" to be sustained assuming examination by tax authorities. Management has analyzed the Fund's tax positions, and has concluded that no liability for unrecognized tax benefits should be recorded related to uncertain tax positions taken on returns filed for open tax years. The Fund identifies its major tax jurisdictions as U.S. Federal and State tax authorities; however the Fund is not aware of any tax positions for which it is reasonably possible that the total

Notes to Financial Statements - continued

amounts of unrecognized tax benefits will change materially in the next twelve months. The Fund recognizes interest and penalties, if any, related to unrecognized tax benefits as income tax expense in the Statement of Operations. During the fiscal year ended March 31, 2018, the Fund did not incur any interest or penalties.

USE OF ESTIMATES

The financial statements are prepared in accordance with GAAP, which requires management to make estimates and assumptions that affect the reported amounts of assets and liabilities and disclosure of contingent assets and liabilities at the date of the financial statements and the reported amounts of increases and decreases in net assets from operations during the reporting period. Actual results could differ from those estimates.

OTHER

The Fund records security transactions based on a trade date. Dividend income is recognized on the ex-dividend date, and interest income, if any, is recognized on an accrual basis. The Fund uses the specific identification method in computing gain or loss on the sale of investment securities. Withholding taxes on foreign dividends have been provided for in accordance with the Fund's understanding of the applicable country's tax rules and rates.

The Fund may invest in real estate investment trusts ("REITs") that pay distributions to their shareholders based on available funds from operations. It is common for these distributions to exceed the REITs taxable earnings and profits resulting in the excess portion of such distribution to be designated as return of capital. Distributions received from REITs are generally recorded as dividend income and, if necessary, are reclassified annually in accordance with tax information provided by the underlying REITs.

EXPENSES

Expenses incurred by the Trust that do not relate to a specific fund of the Trust are allocated to the individual funds based on each fund's relative net assets or another appropriate basis.

3.) SECURITIES VALUATIONS

The Fund utilizes various methods to measure the fair value of most of its investments on a recurring basis. GAAP establishes a hierarchy that prioritizes inputs to valuation methods. The three levels of inputs are:

Level 1 - Unadjusted quoted prices in active markets for identical assets or liabilities that the Fund has the ability to access.

Level 2 - Observable inputs other than quoted prices in active markets included in level 1 that are observable for the asset or liability, either directly or indirectly. These inputs may include quoted prices for the identical instrument on an inactive market, prices for similar instruments, interest rates, prepayment speeds, credit risk, yield curves, default rates and similar data.

Level 3 - Unobservable inputs for the asset or liability, to the extent relevant observable inputs are not available, representing the Fund's own assumptions about the assumptions a market participant would use in valuing the asset or liability, and would be based on the best information available.

The availability of observable inputs can vary from security to security and is affected by a wide variety of factors, including, for example, the type of security, whether the security is new and not yet established in the marketplace, the liquidity of markets, and other characteristics particular to the security. To the extent that valuation is based on models or inputs that are less observable or unobservable in the market, the determination of fair value requires more judgment. Accordingly, the degree of judgment exercised in determining fair value is greatest for instruments categorized in level 3.

The inputs used to measure fair value may fall into different levels of the fair value hierarchy. In such cases, for disclosure purposes, the level in the fair value hierarchy within which the fair value measurement falls in its entirety, is determined based on the lowest level input that is significant to the fair value measurement in its entirety.

FAIR VALUE MEASUREMENTS

A description of the valuation techniques applied to the Fund's major categories of assets measured at fair value on a recurring basis follows.

Notes to Financial Statements - continued

Equity securities (common stocks, including ADRs and real estate investment trusts). Equity securities generally are valued by using market quotations, but may be valued on the basis of prices furnished by a pricing service when the Adviser believes such prices accurately reflect the fair value of such securities. Securities that are traded on any stock exchange or on the NASDAQ over-the-counter market are generally valued by the pricing service at the last quoted sale price. Lacking a last sale price, an equity security is generally valued by the pricing service at its last bid price. Generally, if the security is traded in an active market and is valued at the last sale price, the security is categorized as a level 1 security. When market quotations are not readily available, when the Adviser determines that the market quotation or the price provided by the pricing service does not accurately reflect the current fair value, or when restricted securities are being valued, such securities are valued as determined in good faith by the Adviser, subject to review of the Board of Trustees (the "Trustees" or the "Board") and are categorized in level 2 or level 3, when appropriate.

Money market funds. Shares of money market funds are valued at net asset value and are classified in level 1 of the fair value hierarchy.

In accordance with the Trust's good faith pricing guidelines, the Adviser is required to consider all appropriate factors relevant to the value of securities for which it has determined other pricing sources are not available or reliable as described above. There is no standard method for determining fair value, since fair value depends upon the circumstances of each individual case. As a general principle, the current fair value of an issue of securities being valued by the Adviser would appear to be the amount which the owner might reasonably expect to receive for them upon their current sale. Methods which are in accordance with this principle may, for example, be based on (i) a multiple of earnings; (ii) a discount from market of a similar freely traded security (including a derivative security or a basket of securities traded on other markets, exchanges or among dealers); or (iii) yield to maturity with respect to debt issues, or a combination of these and other methods.

The following table summarizes the inputs used to value the Fund's assets measured at fair value as of March 31, 2018:

<u>Valuation Inputs of Assets</u>	<u>Level 1</u>	<u>Level 2</u>	<u>Level 3</u>	<u>Total</u>
Common Stocks, including ADRs	\$3,544,345	\$0	\$0	\$3,544,345
Real Estate Investment Trusts	333,343	0	0	333,343
Money Market Funds	<u>76,073</u>	<u>0</u>	<u>0</u>	<u>76,073</u>
Total	\$3,953,761	\$0	\$0	\$3,953,761

Refer to the Fund's Schedule of Investments for a listing of securities by industry. The Fund did not hold any level 3 assets during the fiscal year ended March 31, 2018. There were no transfers into or out of the levels during the fiscal year ended March 31, 2018. It is the Fund's policy to consider transfers into or out of the levels as of the end of the reporting period.

The Fund did not invest in any derivative instruments during the fiscal year ended March 31, 2018.

4.) INVESTMENT ADVISORY AGREEMENT

Value Trend Capital Management, LP (the "Adviser"), manages the investment portfolio of the Fund, subject to policies adopted by the Trust's Trustees. Under the Management Agreement, the Adviser, at its own expense and without reimbursement from the Trust, furnishes office space and all necessary office facilities, equipment and executive personnel necessary for managing the Fund. The Adviser also pays the salaries and fees of all officers and trustees of the Trust who are also officers, partners, or employees of the Adviser. The Adviser pays all operating expenses of the Fund, with the exception of taxes, borrowing expenses (such as (a) interest and (b) dividend expenses on securities sold short), brokerage commissions and extraordinary expenses and any indirect expenses, such as expenses incurred by other investment companies in which the Fund invests. For its services, the Adviser receives a fee of 1.95% per year of the average daily net assets of the Fund. As a result of the above calculation, for the fiscal year ended March 31, 2018, the Adviser received management fees totaling \$79,334. At March 31, 2018, the Fund owed \$6,906 to the Adviser.

5.) RELATED PARTY TRANSACTIONS

Jeffrey R. Provence, of Premier Fund Solutions, Inc. (the "Administrator") also serves as trustee/officer of the Fund. Also, control persons of Value Trend Capital Management, LP serve

Notes to Financial Statements - continued

as a trustee and officers of the Trust. These individuals receive benefits from the Adviser resulting from management fees paid to the Adviser of the Fund.

For the fiscal year ended March 31, 2018, the Trustees who are not interested persons of the Fund received Trustees' fees of \$1,500 each, for a total of \$4,500, plus travel expenses from the Adviser of the Fund. Under the Management Agreement, the Adviser pays these fees.

6.) CONTROL OWNERSHIP

The beneficial ownership, either directly or indirectly, of more than 25% of the voting securities of a fund creates a presumption of control of the Fund, under Section 2(a)(9) of the Investment Company Act of 1940. As of March 31, 2018, National Financial Services located at 200 Liberty Street, New York, New York, held for the benefit of its customers, in the aggregate, 25.54% of Fund shares. The Trust does not know whether the foregoing entity or any of the underlying beneficial holders owned or controlled 25% or more of the voting securities of the Fund. Accordingly, it is not known whether National Financial Services or any of the underlying accounts could be deemed to control the Fund.

7.) PURCHASES AND SALES OF SECURITIES

For the fiscal year ended March 31, 2018, purchases and sales of investment securities other than U.S. Government obligations and short-term investments aggregated \$4,956 and \$390,265, respectively. Purchases and sales of U.S. Government obligations aggregated \$0 and \$0, respectively.

8.) TAX MATTERS

For federal income tax purposes, the cost of investments owned at March 31, 2018 was \$2,051,253. At March 31, 2018, the composition of unrealized appreciation (the excess of value over tax cost) and depreciation (the excess of tax cost over value) on a tax basis was as follows:

<u>Appreciation</u>	<u>(Depreciation)</u>	<u>Net Appreciation (Depreciation)</u>
\$1,953,382	(\$50,874)	\$1,902,508

The Fund did not pay any distributions in the fiscal years ended March 31, 2017 and 2018.

As of March 31, 2018 the components of distributable earnings / (accumulated losses) on a tax basis were as follows:

Other Accumulated Losses	\$ (5,953)
Undistributed Long-Term Capital Gains	96,032
Unrealized Appreciation on Investments – Net	<u>1,902,508</u>
	\$1,992,587

As of March 31, 2018, the primary difference between book basis and tax basis was the tax deferral of wash sales. As of March 31, 2018, other accumulated losses included deferred late year ordinary losses of \$5,953.

At March 31, 2018, capital loss carryforwards in the amount of \$141,872 were utilized in the fiscal year ended March 31, 2018.

9.) SUBSEQUENT EVENTS

Subsequent events after the date of the Statement of Assets and Liabilities have been evaluated through the date the financial statements were issued. Management has concluded that there is no impact requiring adjustment to or disclosure in the financial statements.

REPORT OF INDEPENDENT REGISTERED PUBLIC ACCOUNTING FIRM

To the Shareholders of Wireless Fund and
Board of Trustees of PFS Funds

Opinion on the Financial Statements

We have audited the accompanying statement of assets and liabilities, including the schedule of investments, of Wireless Fund (the "Fund"), a series of PFS Funds, as of March 31, 2018, and the related statement of operations for the year then ended, the statements of changes in net assets for each of the two years in the period then ended, including the related notes, and the financial highlights for each of the five years in the period then ended, (collectively referred to as the "financial statements"). In our opinion, the financial statements present fairly, in all material respects, the financial position of Wireless Fund as of March 31, 2018, the results of its operations for the year then ended, the changes in its net assets for each of the two years in the period then ended, and the financial highlights for each of the five years in the period then ended, in conformity with accounting principles generally accepted in the United States of America.

Basis for Opinion

These financial statements are the responsibility of the Fund's management. Our responsibility is to express an opinion on the Fund's financial statements based on our audits. We are a public accounting firm registered with the Public Company Accounting Oversight Board (United States) ("PCAOB") and are required to be independent with respect to the Fund in accordance with the U.S. federal securities laws and the applicable rules and regulations of the Securities and Exchange Commission and the PCAOB.

We conducted our audits in accordance with the standards of the PCAOB. Those standards require that we plan and perform the audit to obtain reasonable assurance about whether the financial statements are free of material misstatement, whether due to error or fraud.

Our audits include performing procedures to assess the risks of material misstatement of the financial statements, whether due to error or fraud, and performing procedures that respond to those risks. Such procedures include examining, on a test basis, evidence regarding the amounts and disclosures in the financial statements and confirmation of securities owned as of March 31, 2018, by correspondence with the custodian and broker. Our audits also included evaluating the accounting principles used and significant estimates made by management, as well as evaluating the overall presentation of the financial statements. We believe that our audits provide a reasonable basis for our opinion.

We have served as the Fund's auditor since 2004.



COHEN & COMPANY, LTD.
Cleveland, Ohio
May 23, 2018

ADDITIONAL INFORMATION - WIRELESS FUND

March 31, 2018

(UNAUDITED)

APPROVAL OF THE CONTINUATION OF THE MANAGEMENT AGREEMENT

On March 8, 2018 the Board of Trustees (the "Board" or "Trustees") for the Wireless Fund met to consider the renewal of the Management Agreement (the "Management Agreement"). In approving the Management Agreement, the Board considered and evaluated the following factors: (i) the nature, extent and quality of the services provided by Value Trend to the Wireless Fund; (ii) the investment performance of the Wireless Fund; (iii) the cost of the services to be provided and the profits to be realized by Value Trend and its affiliates from the relationship with the Wireless Fund; (iv) the extent to which economies of scale will be realized as the Wireless Fund grows and whether the fee levels reflect these economies of scale to the benefit of shareholders; and (v) Value Trend's practices regarding possible conflicts of interest.

In assessing these factors and reaching its decisions, the Board took into consideration information furnished for the Board's review and consideration throughout the year at regular Board meetings, as well as information specifically prepared and/or presented in connection with the annual renewal process, including information presented at the Meeting. The Board requested and was provided with information and reports relevant to the annual renewal of the Management Agreement, including: (i) information regarding the services and support provided to the Wireless Fund and its shareholders by Value Trend; (ii) assessments of the investment performance of the Wireless Fund by Value Trend; (iii) commentary on the reasons for the performance; (iv) presentations addressing Value Trend's investment philosophy, investment strategy, personnel and operations; (v) compliance and audit reports concerning the Wireless Fund and Value Trend; (vi) disclosure information contained in the registration statement of the Wireless Fund and the Form ADV of Value Trend; and (vii) a memorandum from Counsel that summarized the fiduciary duties and responsibilities of the Board in reviewing and approving the Management Agreement, including the material factors set forth above and the types of information included in each factor that should be considered by the Board in order to make an informed decision. The Board also requested and received various informational materials including, without limitation: (i) documents containing information about Value Trend, including financial information, a description of personnel and the services provided to the Wireless Fund, information on investment advice, performance, summaries of Wireless Fund expenses, compliance program, current legal matters, and other general information; (ii) comparative expense and performance information for other mutual funds with strategies similar to the Wireless Fund; and (iii) benefits to be realized by Value Trend from its relationship with the Wireless Fund. The Board did not identify any particular information that was most relevant to its consideration to approve the Management Agreement and each Trustee may have afforded different weight to the various factors.

1. Nature, Extent and Quality of the Services Provided by Value Trend

In considering the nature, extent, and quality of the services provided by Value Trend, the Trustees reviewed the responsibilities of Value Trend under the Management Agreement. The Trustees reviewed the services being provided by Value Trend to the Wireless Fund including, without limitation: the quality of its investment advisory services (including research and recommendations with respect to portfolio securities); its process for formulating investment recommendations and assuring compliance with the Wireless Fund's investment objective, strategies, and limitations, as well as for ensuring compliance with regulatory requirements; its coordination of services for the Wireless Fund among the service providers and the Independent Trustees; its efforts to promote the Wireless Fund and grow its assets; and its provision of a Chief Compliance Officer to the Wireless Fund. The Trustees noted Value Trend's continuity of, and commitment to retain, qualified personnel and its commitment to maintain its resources and systems; the commitment of Value Trend to finding alternatives and options that allow the Wireless Fund to maintain its goals; and Value Trend's continued cooperation with the Independent Trustees and Counsel for the Wireless Fund. The Trustees evaluated Value Trend's personnel, including the education and experience of its personnel. After reviewing the foregoing information and further information in the materials provided by Value Trend (including Value Trend's Form ADV), the Board concluded that, in light of all the facts and circumstances, the nature, extent, and quality of the services provided by Value Trend were satisfactory and adequate for the Wireless Fund.

Additional Information (Unaudited) - continued

2. Investment Performance of the Wireless Fund and Value Trend

In considering the investment performance of the Wireless Fund, the Trustees compared the short and long-term performance of the Wireless Fund with the performance of funds with similar objectives managed by other investment advisers, as well as with aggregated peer group data and category averages. It was noted that information on the Fund's current Morningstar category, the U.S. Fund Technology category (the "Category") and its prior Morningstar category, the Communications category (the "Prior Category"), were both included for comparative purposes. The Trustees noted that Value Trend did not manage any other clients with objectives and strategies similar to the Wireless Fund. As to the performance of the Wireless Fund, the Trustees considered how the Wireless Fund's performance compared to the average performance of funds included in the Category, Prior Category and to a group of funds of similar size, style and objective, categorized by Morningstar (the "Peer Group") within the Category and the Prior Category. Although not the determining factor in the Trustees' considerations, this information assisted the Trustees in concluding to approve the Management Agreement by a measure of how the Wireless Fund compares to other similarly managed funds. The performance data from the Category and Prior Category are for periods ended December 31, 2017 and January 31, 2018 and for the Peer Group for the period ended December 31, 2017. The Trustees noted that for 1-year, 3-year, 5-year and 10-year periods, the Wireless Fund outperformed the Prior Category but underperformed relative to the Category. It was noted that Wireless Fund outperformed its Peer Group for the 1-year, 3-year, 5-year and 10-year periods ended December 31, 2017. The Trustees also noted that the Wireless Fund outperformed the S&P 500 Index and the NASDAQ Composite for the 1-year period ending December 31, 2017. After discussing the investment performance of the Wireless Fund further, as well as reflecting on Value Trend's experience managing and providing services to the Wireless Fund, and other relevant factors, the Board concluded, in light of all the facts and circumstances, that the investment performance of the Wireless Fund was satisfactory.

3. Costs of the Services to be provided and profits to be realized by Value Trend

In considering the costs of the services to be provided and profits to be realized by Value Trend from the relationship with the Wireless Fund, the Trustees considered: (1) Value Trend's financial condition and the level of commitment to the Wireless Fund by Value Trend; (2) the asset level of the Wireless Fund; (3) the overall expenses of the Wireless Fund; and (4) the nature and frequency of advisory fee payments. Trustees reviewed information provided by Value Trend regarding its profits associated with managing the Wireless Fund. The Trustees noted that Value Trend was nominally profitable in regard to the Wireless Fund before indirect costs, and not profitable when including indirect costs. The Trustees also considered potential benefits for Value Trend in managing the Wireless Fund. The Trustees then compared the fees and expenses of the Wireless Fund (including the management fee) to other comparable mutual funds in the Peer Group, the Category and the Prior Category. Although not the determining factor in the Trustees' considerations, this information assisted the Trustees in concluding to approve the Management Agreement by a measure of how the Wireless Fund compares to other similarly managed funds. The Trustees reviewed the fees under the Management Agreement compared to other mutual funds with similar investment objectives and asset levels and noted that the management fee of 1.95% was above the Category and Prior Category average. They performed the same comparison as it relates to the Wireless Fund's expense ratio, noting that the Fund's expense ratio was higher than the average net expense ratio for the Category and Prior Category. The Trustees noted that the average fund in the Category and Prior Category had a larger asset base than the Wireless Fund. They compared the Wireless Fund's management fee and expense ratio to average management fee and net expense ratio of the Peer Group, noting that the Fund's management fee and expense ratio were both higher. The Trustees recognized the expense ratio was near the top end of the range of the Category and Prior Category and that the management fee was the highest of the Category and Prior Category; however, they also recognized that Value Trend is responsible under the Management Agreement for paying for most of the operating expenses of the Wireless Fund's expenses from the management fee. Based on the foregoing, the Board concluded that the fees to be paid to Value Trend by the Wireless Fund and the profits to be realized by Value Trend, in light of all the facts and circumstances, were fair and reasonable in relation to the nature and quality of the services provided by Value Trend.

Additional Information (Unaudited) - continued

4. Economies of Scale

The Trustees next considered the impact of economies of scale on the Wireless Fund's size and whether management fee levels reflect those economies of scale for the benefit of the Wireless Fund's investors. The Trustees considered that while the management fee remained the same at all asset levels, the Wireless Fund's shareholders had experienced benefits from the fact that Value Trend was obligated to pay certain of the Wireless Fund's operating expenses which had the effect of limiting the overall fees paid by the Wireless Fund. In light of its ongoing consideration of the Wireless Fund's asset levels, expectations for growth in the Wireless Fund, Value Trend's commitment to consider adding fee breakpoints as the Fund grows, and fee levels, the Board determined that the Wireless Fund's fee arrangements, in light of all the facts and circumstances, were fair and reasonable in relation to the nature and quality of the services provided by Value Trend.

5. Value Trend's Practices Regarding Possible Conflicts of Interest and Benefits to Value Trend

In considering Value Trend's practices regarding conflicts of interest, the Trustees evaluated the potential for conflicts of interest and considered such matters as the experience and ability of the advisory personnel assigned to the Wireless Fund; the basis of decisions to buy or sell securities for the Wireless Fund; and the substance and administration of Value Trend's code of ethics. The Trustees also considered disclosure in the registration statement of the Wireless Fund related to Value Trend's potential conflicts of interest. The Trustees noted that although an affiliate of Value Trend provides administrative services to the Wireless Fund, as well as the other series portfolios of the Trust, and that the principals of Value Trend derived benefits from that relationship with the Trust – the Trustees concluded that the principals of Value Trend had demonstrated a history of openness and complete disclosure regarding this relationship. Based on the foregoing, the Board determined that Value Trend's standards and practices relating to the identification and mitigation of possible conflicts of interest were satisfactory.

Next, the Independent Trustees met in executive session to discuss the continuation of the Management Agreement. The officers of the Trust and certain other attendees were excused during this discussion. After further review, discussion, and determination that the best interests of the Wireless Fund's shareholders were served by the renewal of the Management Agreement.

This page was intentionally left blank.

Trustees and Officers (Unaudited)

The Board of Trustees supervises the business activities of the Trust. The names of the Trustees and executive officers of the Trust are shown below. For more information regarding the Trustees, please refer to the Statement of Additional Information, which is available upon request by calling 1-800-590-0898. Each Trustee serves until the Trustee sooner dies, resigns, retires, or is removed.

The Trustees and Officers of the Trust and their principal business activities during the past five years are:

Interested Trustees and Officers

Name, Address ⁽¹⁾ , and Year of Birth	Position(s) Held With the Trust	Term of Office and Length of Time Served	Principal Occupation(s) During Past 5 Years	Number of Portfolios In Fund Complex Overseen By Trustee	Other Directorships Held By Trustee
Ross C. Provence, Year of Birth: 1938	President	Indefinite Term; Since 2000	General Partner and Portfolio Manager for Value Trend Capital Management, LP (1995 to current). Estate planning attorney (1963 to current).	N/A	N/A
Jeffrey R. Provence ⁽²⁾ , Year of Birth: 1969	Trustee, Secretary, Treasurer and Chief Compliance Officer	Indefinite Term; Since 2000	CEO, Premier Fund Solutions, Inc. (2001 to current). General Partner and Portfolio Manager for Value Trend Capital Management, LP (1995 to current).	8	Blue Chip Investor Funds Meeder Funds

⁽¹⁾ The address of each trustee and officer is c/o PFS Funds, 1939 Friendship Drive, Suite C, El Cajon, California 92020.

⁽²⁾ Jeffrey R. Provence is considered an "interested person" as defined in Section 2(a)(19) of the Investment Company Act of 1940 by virtue of his position with the Trust.

Independent Trustees

Name, Address ⁽¹⁾ , and Year of Birth	Position Held With the Trust	Term of Office and Length of Time Served	Principal Occupation(s) During Past 5 Years	Number of Portfolios In Fund Complex Overseen By Trustee	Other Directorships Held By Trustee
Thomas H. Addis III, Year of Birth: 1945	Independent Trustee	Indefinite Term; Since 2000	Executive Director/CEO, Southern California PGA (2006 to current).	8	None
Allen C. Brown, Year of Birth: 1943	Independent Trustee	Indefinite Term; Since 2010	Law Office of Allen C. Brown, Estate planning and business attorney (1970 to current).	8	Blue Chip Investor Funds
George Cossolias, CPA, Year of Birth: 1935	Independent Trustee	Indefinite Term; Since 2000	Partner of CWDL, CPAs (February 1, 2014 to current). Owner of George Cossolias & Company, CPAs (1972 to January 31, 2014). President of Lubrication Specialists, Inc. (1996 to current)	8	Blue Chip Investor Funds

⁽¹⁾ The address of each trustee and officer is c/o PFS Funds, 1939 Friendship Drive, Suite C, El Cajon, California 92020.

Investment Adviser

Value Trend Capital Management, LP
1939 Friendship Drive, Suite C
El Cajon, CA 92020

**Dividend Paying Agent,
Shareholders' Servicing Agent,
Transfer Agent**

Mutual Shareholder Services, LLC
8000 Town Centre Dr., Suite 400
Broadview Heights, OH 44147

Distributor

Rafferty Capital Markets, LLC
1010 Franklin Avenue - 3rd Floor
Garden City, NY 11530

Custodian

U.S. Bank, NA
425 Walnut Street
P.O. Box 1118
Cincinnati, OH 45201

Independent Registered Public Accounting Firm

Cohen & Company, Ltd.
1350 Euclid Avenue, Suite 800
Cleveland, OH 44115

This report is provided for the general information of the shareholders of the Wireless Fund. This report is not intended for distribution to prospective investors in the funds, unless preceded or accompanied by an effective prospectus.